

## 1. Gloves



Type: Disposable Powder Free  
Material: Nitrile  
Size: Medium / Large / XL  
Brand: Kimtech Opel – Kimberly Clark

## 2. Surgical Mask



Type: Disposable 3ply  
Material: Non-Woven  
Brand: Indian

## 3. Respiratory Masks



Type: Nuisance Oder masks  
Material: Carbon Filter  
Color: White  
Brand: P95 3M  
Other details:  
Braided Comfort Strap  
With Noseclip

#### 4. Shoe covers



Type: Anti-skid shoe covers

Material: Polypropylene

Color: Blue

Brand: Indian

#### 5. Barrier tape Yellow



**CRIME SCENE DO NOT CROSS**

Type: Crime scene do not cross (3" x1000 ft)-Crime Scene Do Not Cross Barricade Tape 3 X 100 Mtr

Material: LDPE

Color: Bright Yellow with a Bold Black Print

Brand: Indian

Size: 3 inch Wide (70 Micron) for Maximum Readability

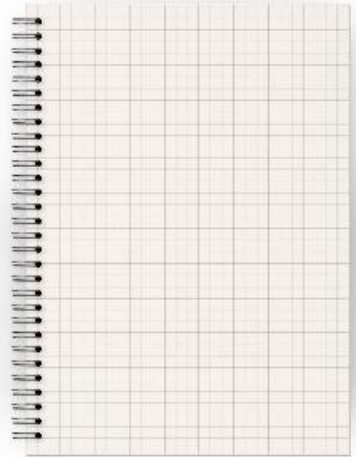
Other details: Tear Resistant

Weatherproof Material

Temporarily Barricading

Clear and bold print

#### 6. Graphic (Sketch) papers



Type: Scale paper books with 30 sheets Squared  
Material: Paper  
Size: A4 size  
Brand: Indian

#### 7. Protecting suits (coveralls)



Type: Protecting suits with shoes with RIB logo  
Material: Made of breathable, micro porous film to keep out debris, non-hazardous liquid chemicals and dry particulates  
Size: Small / Medium / L / XL  
Brand: Kimtech Opel – Kimberly Clark  
Other Details: protective suit comes with a zipper front and elastic wrists and ankles.

#### 8. Evidence seals



Type: Evidence –pro red security tape

Size: pack of 24 rolls of tape

Brand: Indian

Other Details: Security tape used to justify illegal attempt to open box or Packets

Temporarily Barricading

Clear and bold print

#### 9. Forensic swabs



Type: Sterile DNA free cotton tipped swabs

Size: 100/Pack

Brand: Indian Brand

Other details: The new Forensic Swabs from Sarstedt are suited for the collection of both reference samples and evidence of DNA traces at crime scenes

#### 10. Paper evidence bags



Type: Paper Bag

Size: Small (3" 1/2 x 6" 1/2) / Medium (6" x 9") / Large (9" x 12")

Brand: Indian

Other Details: They are self-sealing and preprinted with all the appropriate information

## 11. Forensic Latent Fingerprint Lift Pads

---



Type: Latent Fingerprint Lift Pads

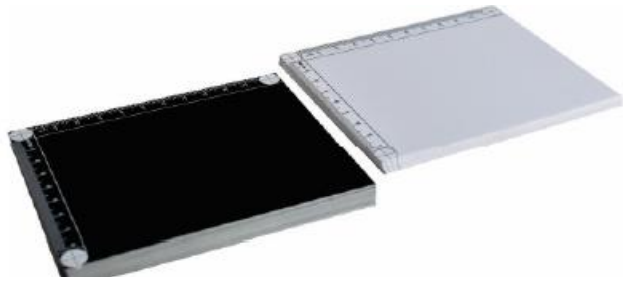
Size: 2" x 4"

Material: The backing card flaps are made from heavy-duty black, white, transparent sheets and comes permanently attached to the flap lifter.

Other Details: Simply peel the protective backing sheet to expose a clear sticky back lifting tab, then place the tab on the powdered print, lift it, and fold down on the pre-attached backing card flap.

Brand: Indian

## 12. Latent Print Backing Cards



Type: Backing Cards

Size: (3" x5")

Brand: Indian

Color: Black / White

Other Details: Prints down, these cards are the only choices to ensure you have the best quality to identify and preserve your evidence. Complete with record maintenance sheet on back and feature a glossy white or black side for mounting your lifts.

### 13. Fingerprint Lift tape



Type: Fingerprint lifting tape

Other Details: Our fingerprint lifting tape is made specially for lifting developed latent fingerprints. It is very strong and elastic, and will adapt easily on textured, convex and concave surfaces. The tape is crystal clear. Comes in a protective case.

Brand: Indian

### 14. Gel lifters



Type: Gel lifters

Material: Gel lifters are made of high quality elastic sheets of rubber with a low adhesive gelatin layer on one side.

Brand: Indian

Size: 13 x18cm

Color: White / Black

Other Details: Its advantage are high elasticity and low tack. It's elasticity allows latent pickup on uneven or curved surfaces

## 15. Dead body Bags



Type: Body Bags with 6 Outside Handles Dead body carrier for Mortuary

Material: Polyester

Size: 220X90 Cm

Other Details: Bags to temporarily store and remove cadavers. Used at crime scene, accident and disaster.

#### **16. Sterile water**





Type: Sterile water  
Size: 5 ml  
Brand: Indian Brand

### 17. Hand sanitizers



Type: Refillable Gel Hand Sanitizers, Counter Top  
Material: Alcohol Base

Brand: Indian Brand  
Size: 500ml  
Other Details: Refillable Pump Bottle

### 18. Alcohol

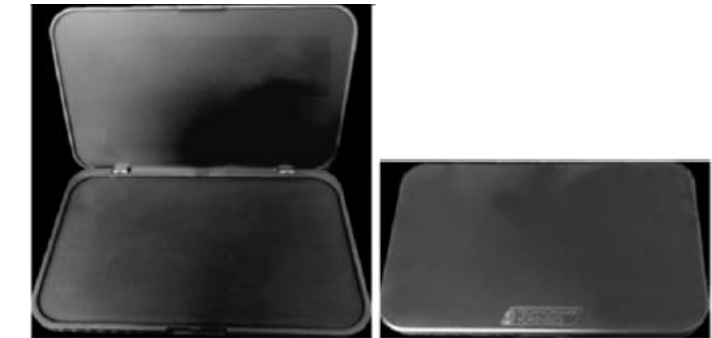
Type: Alcohol with 99% concentration  
Size/Qty.: 500 mL Jerry cans - Pocket sized for easy portability refillable pump action dispensers.  
Other Details: No need to wash hands after use Effective against a wide range of bacteria and viruses including MRSA. Pocket sized for easy portability.

### 19. Tape measure



Type: Fiberglass Top Line Measuring Tape  
Blade materials: Fibreglass, Metal, Polyvinyl Chloride, Alloy Steel  
Color: Grey  
Size: 30 m  
Brand: FREEMANS FT30 - 30m Indian

### 20. Porelon fingerprint ink pads



Type: Micro reticulated thermoplastic Pad  
Size: 2-3/4" x 5-1/4" or 4" X 6"  
Other Details: Non toxic, non messy formula & harmless to skin. Makes a crisp, clear imprint, never smear, dries instantly Leaves a little ink on the fingers tips

### 21. Nail clippers



Type: Disposable

Brand: Indian Brand

Other Details:

Disposable scalpels with high quality precision blades.

Ergonomically designed for better feel and precision.

Disposable ABS plastic handle.

Each pack sterilized.

Manufactured in accordance with the highest quality standards and product specifications from USA and Europe.

## 22. Yellow plastic markers



Type: Markers

Material: Plastic

Size: (3" x 6") Numbers (1-30)

Brand: Indian brand

Color: Yellow

Other Details: Photo Evidence Tent Marker

These are numbered signs for use at crime or accident scenes to indicate the location of relevant evidence.

### 23. Fingerprint Ridge builder



Type: Fingerprint Ridge Builder

Size: 8oz pump, 16oz refill or 4oz refill

Brand: Indian Brand

Other Details: Our unique ridge builder solution brings excellent definition and clarity to fingerprint ridge structures

Unique solution that will bring excellent definition and clarity to fingerprint ridge structures.

It is applied to the finger bulbs before fingerprinting—making it possible to obtain legible fingerprints from brick masons, agricultural workers, the elderly, or anyone else who has poor fingerprint ridge structure.

This product will help increase the number of successful latent print searches and subsequent comparisons by ensuring better initial fingerprint recordings.

### 24. Adhesive scale



Type: Adhesive backed photo scale tape

Size: 1"×500" cm

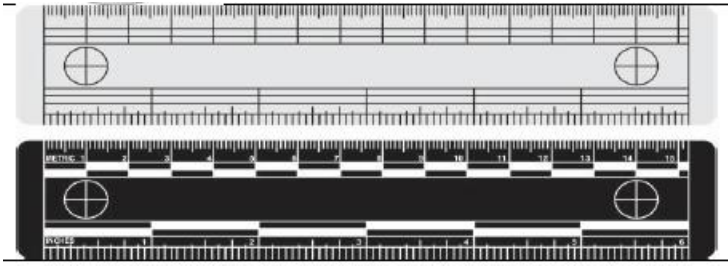
Brand: Indian

Other Details: Mini Adhesive Scale

These scales are 1" wide and are printed on flat, pressure-sensitive label stock with a non-permanent adhesive back.

Use them on vertical or horizontal surfaces. Fingerprints, traces of blood and bullet holes are easily measured for photographic purposes.

## 25. Scale



Type: Scale

Material: Vinyl

Size:

Color: White with Black

Brand: Indian

Vinyl scales when photographing evidence for precise measurement.

The scales calibrated in both inches and millimeters with crosshairs at each end.

The scales also feature a flat finish which eliminates reflections.

## 26. Insecticide

Type: Super insecticide aerosol

Other Details: flying and crawling insects killer

## 27. Fire debris packaging materials



Type: Unused lined metal paint cans with tight fitting friction lids

Brand: Indian Brand

These containers offer a method of preserving "solid" forms of physical evidence including arson investigation evidence.

Solids are collected and placed in these cans and once the lid is in place, an airtight seal is formed preventing flammables and hydrocarbons from evaporating into the atmosphere.

## 28. Presumptive Tests for blood

Type: Substances of hemastix: Benzidines, Chromogenic Compounds, Reagent Strips, Phenol, 3,3',5,5'-tetramethylbenzidine, Chloroform etc.

## 29. Presumptive Tests for Semen

Type: Acid phosphatase chemical test:

Material: Filter paper, forensic swabs, sterile water, reagents A ( $\alpha$ -naphthyl phosphate, Fast Red TR, Citric Acid, Sodium Citrate and pH  $5.3 \pm 0.1$  at  $20^{\circ}\text{C}$ ), reagent B (Sodium L-Tartrate) and reagent C (Acetate Buffer).

### 30. Residue footprint lifters (black and white)



Type: Footprint Lifters

Size: 6" x 15" (15.2cm x 38.1cm twelve per pack

Brand: Indian Brand

Color: Black / White

These unique footprint lifters are designed to allow for an accurate transfer of foot or footwear prints from dusty and/or dirty surfaces.

They are particularly useful when dealing with lightly covered surfaces because they don't generate static electricity like standard lifting tapes.

### 31. Presumptive Tests for blood



Type: Substances of hemastix: Choose between four pairs or eight pairs of individually sealed tablets.

Brand: Bluestar USA

Other Details: Each packet contains one reagent tablet and one catalyst tablet. Dissolve both tablets in distilled water and spray with a fine mist atomizer. Each pair will produce 125ml (4 oz) of solution. Eight pairs will produce 1 liter (32 oz).

### 32. Presumptive Tests for Semen



Type: Acid phosphatase chemical test

Other Details: A 2-5 drop aliquot of deionized water was placed on a suspect area of a garment, and an AP test strip was pressed against it. A color change to bright purple within 15 s was a POSITIVE test.

### 33. Residue footprint lifters - black and white



Type: footprint Lifters

Color: Black / White

Size: 6" x 15" (15.2cm x 38.1cm twelve per pack)

Other Details: These foot print lifters are uniquely design to allow for anaccurate transfer of foot or footwear prints from dusty or dirty surfaces.

### 34. Synthetic (artificial) blood

Material: FO-9982 -12% / Yolk lecithin -2.4% / DSPE-50 H -0.12% / Distilled water -57.48%

Size: 250ml/bottle

### 35. Amido-Black

Material and Other Details: Dye content (spectrophotometrically)  $\geq 80\%$  / Identity- sodium - passes test / UV/VIS-Spectrum -passes test / Absorption maximum  $\lambda_{max}$  (water) 617 - 620 nm / Spec. Absorptivity A 1%/1cm ( $\lambda_{max}$ ; 0.01 g/l; water) 750 – 960 / TLC-Test -passes test / Loss on drying (110 °C)  $\leq 10\%$  / Suitability for electrophoresis -passes test / Suitability as redox indicator -passes test / Form. Powder. / Loss on Drying.  $\leq 10.0\%$  / UV/Vis. UV ratios: Absorption maxima wavelength: 617 to 620 nm. / Assay (Dye) Dye Content:  $\geq 84.00\%$  / Appearance (Color) Dark blue to reddish-black powder.

### 36. Leuco crystal Violet

Type & Material: used at crimes scenes to enhance the appearance of blood / on substrates of nonporous surfaces. LCV is clear, but in / contact with blood or certain other biological substances, / turns deep purple, Reagents / Crystal violet (C.I. 42555) 25 g, 100 g, for microscopy / Certistain® 1 kg / Color Index No.: 42555.

Other Details: Other requirements: Cat. No. 100983 Ethanol absolute 1 l, 2.5 l, for analysis / EMSURE® ACS,ISO,Reag. Ph Eur 5 l / Cat. No. 101192 di-Ammonium oxalate monohydrate 250 g, / for analysis EMSURE® ACS,ISO,Reag. Ph Eur 1 kg / Cat. No. 100567 Lugol's solution stabilized with PVP 1 l, 2.5 l / for the Gram staining method or / Cat. No. 109261 Lugol's solution (diluted iodine-potassium 1 / l, 2.5 l iodide solution) for the Gram staining method / Crystal violet solution / For preparation of approx. 100 ml solution mix: / Crystal violet (C.I. 42555) Certistain® 2.0 g / Ethanol 96 % 20 ml dissolve / Ammonium oxalate solution 1 %, aqueous 80 ml mix and / filter

Crystal violet is a dye that will transfer visible color to the fatty components of sebaceous sweat residue in latent prints, producing a highly concentrated, intense, purple image.

It is very effective in the development of latent prints on items having a glutinous or sticky adhesive quality, including tape and protective films with adhesive coatings.

Crystal Violet is also effective on grease- and oil-contaminated surfaces.

### 37. Luminol

Type: Luminol

Other Details: can be applied by spraying it onto an area of the crime scene suspected of having blood present. reacts with iron in hemoglobin to release blue light

### 38. Phadebas

Type: Phadebas is a presumptive test used in forensic science examinations for the detection of areas of possible saliva staining.

Other Details: A Phadebas® tablet consists of homogeneously interlinked starch polymers, taking the form of globular microspheres of defined size.

### 39. Mikrosil Casting Putty Kit



Mikrosil casting kit is used to obtain tool marks and other impressions. / ü

Kit Content:

Mikrosil tube,



hardener,  
10 spatulas,  
book of mixing pads and instructions.

Brand: Indian

Other details:

When casting small details that need high-contrast for microscopic examinations, use the MIKROSIL Casting Material Kit.

#### 40. Protractor/Angle Finder



Type: protractor/angle finder

Size: 6"

Brand: Indian Brand

Material: made of high strength plastic with brass hardware.

Other Details: Measures transfer inside, outside, and slope angles. The finest multi-purpose protractor on the market.

#### 41. ABFO No. 2 Photomacrographic Scales - Plastic – White / Black



Type: These rulers were designed to give the photographer and the developer the ability to have a scale for small items that need a clear scale for development. The white metric corner square

includes an 18% gray half tone and is commonly referred to as an ABFO #2. These rulers are available of durable plastic.

Brand: Indian brand

Color: Whit / Black

These scales are designed primarily for footwear and tire track impression comparisons.

They are excellent for verifying perspective distortion. The scales are printed on rigid vinyl plastic and feature exceptionally sharp division indicators.

#### **42. Adjustable Casting Frames - Footwear - 7.25" x 12"-18"**



Material: All-aluminum adjustable casting frames are designed to work with Arrowstone.

Size: Footwear, 7.25" x 12"-18"

Brand: Indian brand

Other Details: Available in sizes for both footwear and tire impressions, they are adjustable to fit most situations. Casting frames allow the mixture to build over the print while making a uniform edge storing and for preserving the impression.

These all-aluminum, adjustable casting frames restrict the flow of casting compounds.

#### **43. Arrow Stone Field Kit – Blue and Green**

Type: The Arrowstone Field Kit combines all the necessities of casting within one kit.

Color: Blue / green

Other Details: Our casting material is pre-measured in 2lb mixing bags. Simply add ≈6.5oz water and begin mixing until you reach a pancake batter-like consistency. Setting time is approximately 5-10 minutes. Since each bag is self-contained, Arrowstone is easy to store and transport. This kit eliminates the need to repackage bulk material and worries over moisture control.

**Kit contents:** 5) 2lb Arrow stone Bags / 5) Wooden Spreading Sticks / 1) Measuring Cup / 1) 1.5 oz Dust & Dirt Hardener

#### **44. Sure seal Biohazard Labels on Rolls - 1.5" x 1.5" - 250/roll**



Type: Large Square Biohazard Label

Size: 1.5" x 1.5" 250/roll

Brand: Indian brand

Other Details: The following labels contain the international Biohazard Symbol and are printed on fluorescent orange stock to insure visibility. Provided on a roll for easy dispensing. 1.5" x 1.5" labels provided in a clear, reusable plastic dispensing case.

#### 45. Bio-Foam - Double Pack



Type: Bio-Foam® Impression Foam is an easily compressible foam, engineered for accurate foot/shoe impressions.

Size: 13.75" x 5.875" x 2.25"

Other Details: Bio-Foam® Impression Foam accurately captures and reproduces an impression in seconds! This Impression Foam is praised for its ease of handling, durability, cleanliness and unmatched quality. Because of its closed-cell structure, Bio-Foam® is moisture-proof to prevent distortion and contamination. Bio-Foam® is used to take detailed impressions of a suspect's

shoe. Simply press the known shoe gently into the foam. The resulting impression will provide an accurate detail of the shoe for future comparison. Sold in a double pack. All Bio-Foam® Impression Foam slabs are sized 13.75" x 5.875" x 2.25"

#### 46. Master Crime Scene Sketching Kit



Type: Outfitted with everything needed to quickly and accurately diagram a crime scene.  
Other Details: The included polydura field case provides a firm writing surface and protects the sketching templates and paper when not in use. The polydura field case has a convenient carrying handle for easy transport across the scene.

Brand: Indian Brand

**Kit includes:**

- Pad of Cross-Sectional Paper
- Mechanical Pencil
- Heavy Duty Square
- Protractor/Angle Finder
- General Traffic Sketching Template Set
- General Crime Scene Sketching Template
- Human Figure Sketching Template
- Directional Compass
- 50' Measuring Tape
- Polydura Case.

#### 47. Capture™ Portable Fuming System - Stainless Steel Shelf

Type: Allows evidence to be supported in the clear chamber during development. Type 304 stainless steel. One shelf is included with each Capture Portable Fuming System.

Other Details: Stainless Steel Shelf Weight: 6.0 lbs / Weight metric: 2.7 kg / Dimensions: 12" x 12" x 10" / Dimensions metric: 30.5 x 30.5 x 25.4 cm / Applicable Products: Capture Portable Fuming Systems.

**48. Aluminum Fuming Dish - 2 oz Capacity - 100/pk**



Type: Aluminum fuming dishes used for cyanoacrylate processing of latent prints.

Size: 2.25" x 5/8" 2 oz capacity 100/pk

Other Details: These dishes are ideal for Cyanoacrylate fuming. A small amount of cyanoacrylate placed inside the dish and placed on a hot plate or in a chamber will cause rapid fuming of the cyanoacrylate.

**49. Liquid Glue Hot Plate**



Type: This hot plate provides uniform heating and is easy to use.

Size & Other Details: The hot plate features a large 7.6cm (3") diameter heating surface and the hot plate measures 11.4cm x 11.4cm x 1.3cm (4.5" x 4.5" x 1/2") and fits easily into any fuming chamber. Max temperature: 160°F (71°C).

**50. Protective Goggles - Orange -Adjustable Strap Style**

Type: Protective Goggles

Color: Orange / Yellow

Brand: Indian

Other Details: These adjustable nylons framed goggles provide personal protection and standard absorption for use with forensic lasers. Case included. Absorption coverage: 190-532nm. Argon, Adjustable Strap Style.

**51. Gun Shot Residue Kit - 4 Stub SEM - Plastic Case**

Type: SEM (Scanning Electron Microscopy) tests are conducted through analysis of the residues which have been collected on sticky metal stubs. These kits come in a 4 stub application and

includes instructions, information sheet, gloves, security seals and a plastic box. Box dimensions 5" W x 3" H x 1.5" D.

Other Details: GSR Collection Kit Contents:

2 or 4 Carbon Disks (SEM)

1 Pair Protective Gloves

Security Seal

Plastic Case

Information Sheet

Instructions

52. Syringe/Sharps Evidence Collection tubes - 7" x 1"

Type: These clear plastic tubes will preserve the evidence and protect the evidence custodian.

Both sizes include a custom foam insert for immobilization, evidence strips for sealing, and a biohazard label to clearly mark the evidence as a possible hazard.

Size: Tubes are 7" x 1" 12/pk/ Tubes are 18" x 3" 6/pk.

53. Palm print Residue Lifter



Type: These 6" x 7" lifters are designed for palm prints that are developed with powder on flat surfaces. They feature a clear acrylic sheet and a 10ml white vinyl adhesive backing sheet.

They are appropriate for major case crimes and are convenient for elimination prints.

Size: 6" x 7" 12 adhesive vinyl lifters/12 polyester clear cover sheets

54. Disposable Hair Net



Type: Disposable  
Color: Sky Blue  
Brand: Indian Brand  
Other details:

#### 55. Electrostatic Dust Print Lifting Kit

---



Type: Handy & easily carry  
Brand: Indian Brand



Kit contents:

Electrostatic Dust Mark Lifting Device: 01 no,  
Static Discharge Cable: 01 no,  
Film Roll for Lifting Dust Mark 20" wide: 01 no,  
Ground Plane, Steel 4"x6": 01 no,  
Ground Plane Insulated Sheet 5"x7": 01 no,  
Heavy Duty Rubber Gloves: 01 no,  
Plastic Handle Scissor: 01 no,  
Wooden Handle Roller: 01 no,  
Set of Photography Rulers (wooden folding, Vinyl, ABFO): 01 pkt,  
Set of Adhesive Rulers (L Shape Roll, Rigid Photo Evidence Scale): 01 set,  
Molded Case, Customized Carrying Case: 01 no.

#### 56. Foot & Tire Print Casting Kit



Type: Handy & easy carry

Brand: Indian Brand

Kit contents: Foot Print Frame: Aluminum 14" x 6" x 2",

Dirt Hardener: 200 ml,

Flexible Mixing Bowl (dish): Different Sizes 3 Nos,

Spatula: steel,

Mixing Spoon: steel,

Measurement Tape: small,

Evidence Tag: Pre Printed (Pack of 50),

Wire Gauge: 4" x10" (Pack of 20),

Casting Material: 2.5 Kg Top Grade,

Aerosol Sparer: Plastic,

Water Can: 1 Ltr,

Silicon Spray: One Bottle,

Disposable Pipettes: Pack of 12,

Spray to Mark Evidence Area: One Bottle,

Surface Brush: Normal,



Molding Clay: 50 mg

57. AccuTrans silicon Casting



Type: Handy & easy carry

Brand: Indian

Other details:

Kit contents:

75ML Brown Casting Cartridge (1),

75ml White Casting Cartridge (1),

75ML Transparent Casting Cartridge (1),

75 Black Casting Cartridge (1),

Mixing Tips(10),

Spreader Tips (6),

Spatulas (10),

Dispensing Gun (1),

Zipper Carry Case

58. Digital Pocket Thermometer



Type: Pocket type

Other details:

Water proof

Resolution time: 500miniseconds

#### 59. Forensics UV Light for Crime Scene Investigation



Type: Handy & Easy carry

Brand: Indian

Kit contents:

Super-bright visible LED optical output and ultra-high intensity UV-A LED performance, Eight Qwik- ConnectY interchangeable single-wavelength LED heads provide ultimate versatility, Each LED head features an internal dome lens to ensure uniformity of light source.

Ideal for forensic photography,

Instant-on operation allows lamp to reach full intensity immediately,

Three snap-on contrast filters (yellow, orange and red) allow for multiple users of lamp without the need to wear spectacles,

Electronic Intensity Stabilizer ensures consistent performance.

LEDs maintain high intensity between charges, Red/green battery strength indicator light signals when fresh charge is required,

Powered by rechargeable NiMH battery. Provides 90 minutes of continuous inspection between charges (smart AC and DC chargers included).

AC charger available in 120V, 230V, 240V and 100V versions,

Includes four pairs of spectacles (UV-absorbing, yellow, orange and red contrasting) and a padded carrying case

#### 60. Spotlight 10000 Lumen 6 Lights Modes, 10000 mAh USB Output Rechargeable Spotlight, IP65 Waterproof Rechargeable Flashlights Come with Collapsible Tripod & Strip



MODEL NO. KB2046-F6

Technical specifications

The spotlight uses an upgraded CREE LED, outputs 10000 lumens, provide 3200 ft distance. The led spotlight with stable beam concentration, the bright spotlight can be used as a tactical flashlight or spotlight flashlight.

#### 6 Lights Modes

The rechargeable spotlight features front and side 6 working modes. High/low light & flash light- all modes have the brightest light.

#### Long Lasting Battery Time

led spotlight rechargeable has 10000 battery capacity to guarantee recharge 1000 times+. The led spot light delivers 24 hours of run time in high mode, while low mode run times can last 30 hours or longer. The best partner for outdoor camping or grill activities!

#### IP65 Waterproof & Heat Dissipation

The portable spotlight used impact-resistant ABS material resistance to fall off. IP65 waterproof rechargeable spotlight flashlight is able to work on high temperatures, rain, or snowy days.

#### Portable & Widely Used

Brand: Indian

### 61. Fingerprint Instantant powder kits



Type: Handy & easy carry

Brand: Indian

Other details:

kit contents:

instant black,

instant white,

instant silver,

instant gold,

instant copper

fiber brushes

### 62. Fingerprint Magnetic powder kits



Type: Handy & easy carry

Brand: Indian

Other details:

kit contents:

magnetic jet black,

magnetic black,

magnetic white,

magnetic red,

magnetic silver,

magnetic grey,

magnetic grey special

magnetic brushes

63. Full Brim Construction Hard Cap. Safety Helmet Protection Aluminum hat Silver P



Material: High strength aluminum

Color: Silver

Brand: Indian

Other details:

Full brim Aluminum hard hat safety helmet.

High temperature  
corrosion resistance

wear resistance.

Light in weight.

Convenient to use.

Durable in use.

Used in construction, railway, metallurgy, coal mine, shipbuilding, oil, port, chemical and other

industries.

#### 64. Safety Shoes



Material Synthetic Leather

Type: Closure Laces

Color: Black

Size: 39, 40, 41, 42, 43, 44, 45

Brand: Indian Brand

Other details: Chemical Resistant: Yes,  
Steel Toe Safety,  
lightweight,  
heat resistant,  
oil-resistant and anti-slip

#### 65. Windproof Travel Umbrella



Color: Blue

Brand: Indian

Other details: RIB color (Blue & White)  
SOCO word to be printed